



Del Coronado

European Collection

An exalted example of wooden Victorian beach resort architecture that was itself inspired by Western European design, the famous Hotel Del Coronado in San Diego celebrates the exuberance of the Gilded Age. The Del Coronado home is not meant to represent a literal scaled-down version of the historic landmark, but the character resides in the details. The rotunda, domed ceilings and rounded corners of this house plan are a few of the nods gleaned from a visit to the grand hotel in 1995.



Del Coronado

KENT *select*
A SMARTER WAY TO A LUXURY HOME



Visit our Design Center today at 1721 Allens Lane, Suite 202, Wilmington, NC 28403
toll free 877 256 5313 p 910 256 5313 f 910 256 5302 www.kentselect.com



Del Coronado

A distinct home style in our European Collection



Del Coronado

KENT *select*
A SMARTER WAY TO A LUXURY HOME

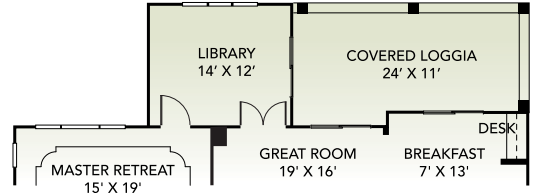
square footage - standard

total heated: 2,340 sq.ft.
covered outdoor living: 267 sq.ft.
garage: 524 sq.ft.
storage (walk-in): 504 sq.ft.

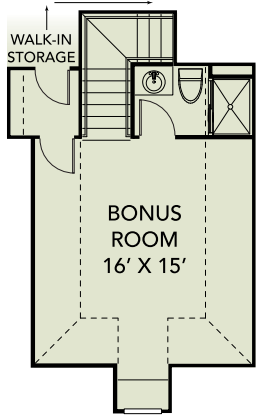
total 3,635 sq.ft.

overall dimensions

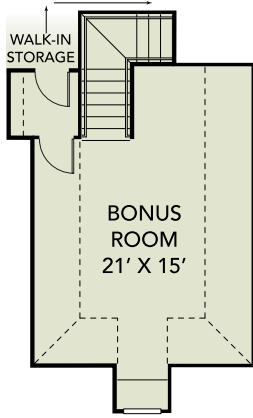
57'6" width X 82' depth



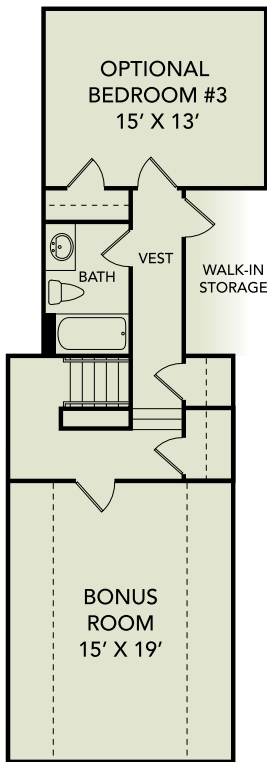
library: 168 sq.ft. loggia: 271 sq.ft.



total heated: 349 sq.ft.



total heated: 349 sq.ft.



total heated: 717 sq.ft.

