



Hall Park Series of Homes

European Collection

England is known for elegant gardens, and the courtyard entry of this plan, while optional, makes a statement straightaway. The Hall Park Hotel, in the town of Workington centrally located in the lake district of Cumbria, inspired this home's level of comfort and easy-living style. A cozy library on the front of the home has attractive French doors that also open onto the covered entry. Diagonally opposite the entrance is the loggia with an optional pool. The interior is open and airy, but the very luxurious master retreat is tucked away for maximum privacy.



Hall Park I



Hall Park II

KENT *select*
A SMARTER WAY TO A LUXURY HOME



Visit our Design Center today at 1721 Allens Lane, Suite 202, Wilmington, NC 28403
toll free 877 256 5313 p 910 256 5313 f 910 256 5302 www.kentselect.com



Hall Park Series of Homes

Two distinct home styles in our European Collection



Hall Park I



Hall Park II

KENT *select*

A SMARTER WAY TO A LUXURY HOME

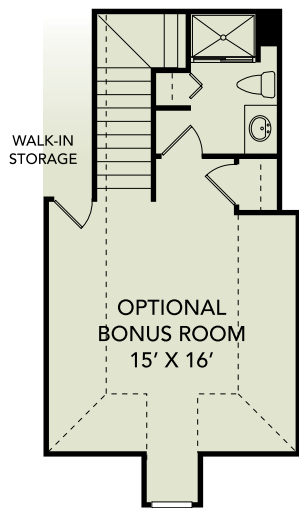
square footage - standard

total heated: 2,780 sq.ft.
 covered outdoor living: 296 sq.ft.
 garage: 484 sq.ft.
 storage (walk-in): 441 sq.ft.

total 4,001 sq.ft.

overall dimensions

54'8" width X 99'8" depth



total heated: 356 sq.ft.

